

PoE Splitter Module

Features

- Converts 802.3at PoE input to DC 12V 25W output
- Compatible with 802.3af
- Gigabit Compatible
- Extended Temperature Range: -40 to +85C
- Short Circuit, Over Current and Over Voltage Protection

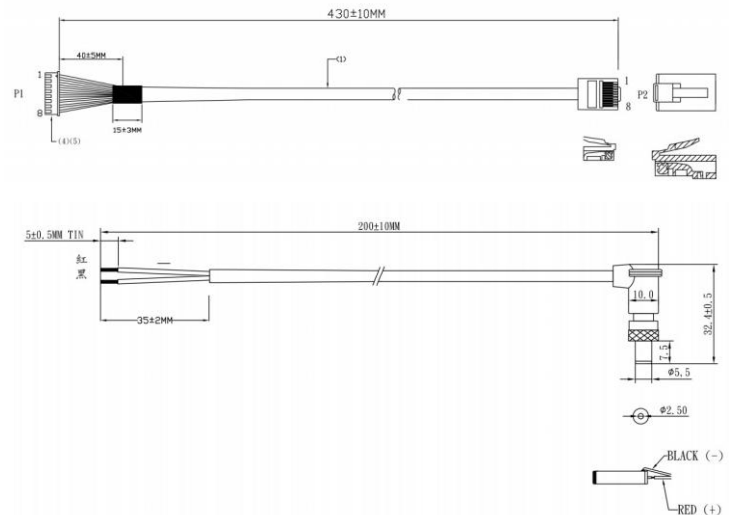
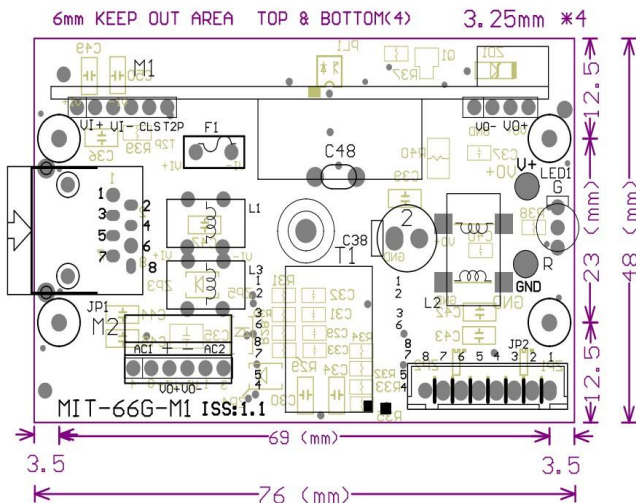


Description

The POE-SPLT-4812G-MT is an active splitter module which converts an 802.3at DC PoE input voltage to 12V 25W DC regulated output voltage. It is also compatible with 802.3af input but the corresponding output power will be 12W. The output is provided on a right angle locking 5.5mm/2.5mm x 11mm barrel connector at the end of a 200mm cable. Ethernet cable is 43mm in length and terminate with an RJ45 connector without strain relief boot. The unit supports Ethernet speeds of 10/100/1000MB. There are various protections for short circuit, over-voltage and overload.

Device Pinouts – 10/100/1000MB

| RJ-45 Input (Data & Power) | | | RJ-45 Output (Data) | |
|----------------------------|-----------------|-------------------------|---------------------|--------------|
| Pin | Symbol | Description | Symbol | Description |
| 1 | BI_DA+, Vin +/- | Data A RX+ / Power(+/-) | BI_DA+ | Data A RX(+) |
| 2 | BL_DA-, Vin +/- | Data A RX- / Power(+/-) | BI_DA- | Data A RX(-) |
| 3 | BI_DB+, Vin +/- | Data B TX+ / Power(+/-) | BI_DB+ | Data B TX(+) |
| 4 | BI_DC+, Vin +/- | Data C RX+ / Power(+/-) | BI_DC+ | Data C RX(+) |
| 5 | BI_DC-, Vin +/- | Data C RX- / Power(+/-) | BI_DC- | Data C RX(-) |
| 6 | BI_DB-, Vin +/- | Data B TX- / Power(+/-) | BI_DB- | Data B TX(-) |
| 7 | BI_DD+, Vin +/- | Data D RX+ / Power(+/-) | BI_DD+ | Data D RX(+) |
| 8 | BI_DD-, Vin +/- | Data D RX- / Power(+/-) | BI_DD- | Data D RX(-) |



Specifications

| | POE-SPLT-4812G-MT |
|-----------------------------------|--|
| DC Output Voltage | 12VDC |
| Output Current | 2.1A |
| Output Power | 25W Max |
| DC Output Connector | 5.5mm / 2.5mm x 11mm Right Angle Locking Barrel Connector, Center Positive |
| DC Output Cable Length | 200mm (7.87") |
| Load Regulation | 5% |
| Line Regulation | 1% |
| Ripple | 1% |
| Noise | 5% |
| POE Input (RJ45) | 40 – 60VDC, 802.3af Mode A or B, 802.3at Mode A or B or 48V Passive PoE |
| Ethernet Speed | 10/100/1000MB (Gigabit Compatible) |
| Efficiency | 86% Min |
| LED | GREEN = 802.3at Input, RED = 802.3af Input |
| EMC Standards | FCC Class B NE55022 Class B |
| Protections (auto-recover) | Output Short Circuit, Overload, OverVoltage, Input UnderVoltage (32VDC) |
| Isolation Voltage | 1500VDC |
| Isolation Resistance | 100M Ohms Minimum |
| Operating Temperature | -40 to +85°C (-40 to +185°F) |
| Operating Humidity (RH) | 5% - 90% non condensing |
| Storage Temperature | -40 to +85°C (-40 to +185°F) |
| Dimensions (LxWxH) | 76 x 48 x 38mm (3 x 1.9 x 1.5") |
| Weight | 95g (3.4oz) |
| Warranty | 1 Year |

System Ordering:**POE-SPLT-4812G-MT**

PoE Splitter/Voltage Converter 802.3af/at PoE Input to 12VDC 25W output

For further information contact:tyconsystems.com

14641 S 800 W Ste A Bluffdale, UT 84065
 PH: 801-432-0003 FAX: 801-618-4220