

ProWeatherStation™

Features

- Plug and Play – Easy setup and operation
- 48 sec data update, instantaneous average and peak
- Inside and Outside Temperature and Humidity
- Solar Insolation and UV Index Measurement
- Wind Speed and Direction Including Average and Gust
- Wind Chill and Dew Point Temperature Display
- Barometric Pressure with last 12hr history
- Rain Gauge with Last Hour, Day, Week, Month or Total
- RCC Clock, Moon Phase and Weather Forecast
- Built-in Data Logging for 4080 Readings: Unlimited with PC
- Settable Alarms and Resettable Min/Max History
- User Programmable Calibration Factors
- Up to 330 Ft (100m) Wireless Range Between Transmitter and Base Station
- Solar Powered Transmitter with 2 AA Rechargeable Batteries
- Free WeatherSmart Windows Software with WeatherUnderground Upload



ProWeatherStation™



Applications

- Weather Tracking and Forecasting
- Solar Insolation Site Survey – Measure how much sun power is available at a particular site
- Wind Turbine Site Survey – Record wind speed at site over time to determine available true wind power
- Remote Temperature and Humidity Monitoring

Description

The ProWeatherStation™ is a high performance wireless data logging weather station with advanced sensor technology resulting in good accuracy at a low cost. It provides instantaneous and historical data on Inside and Outside Temperature and Humidity, Wind Speed (average and gust), Wind Direction, Solar Intensity and UV Index, Barometric Pressure and Rainfall. The backlit base station logs 4080 data points with adjustable (16 second minimum) sample interval. There is a memory meter on the display that shows when the memory is getting full so the data can be downloaded and archived to a computer thru the built in USB port and included WeatherSmart software. The WeatherSmart software also allows for uploading real-time data to WeatherUnderground.

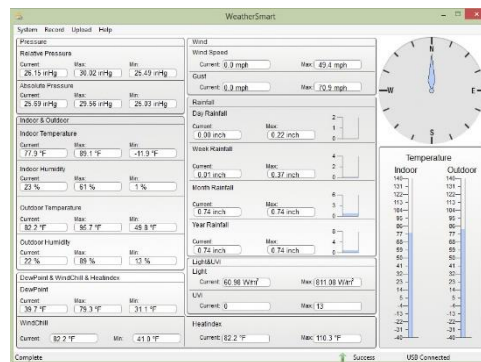
The unit has a radio controlled clock (WWVB) for improved accuracy. The Base Station runs on 3 AA Alkaline or Lithium batteries and can be mounted up to 100m (330 feet) away from the transmitter/sensor array. To extend battery life the Base Station can also be powered through USB (included) or a 5V AC Adapter (sold separately). The transmitter/sensor array is solar powered and with 2 AA rechargeable batteries it will run for many years so there are no worries with mounting the array on top of a building or tower.

The ProWeatherStation™ comes with an advanced solar powered sensor array (anemometer, direction meter, temp/humidity sensor, rain gauge, 0.8"OD x 22.5" (20mm OD x 571mm) stainless mounting pole), wireless base station/display, USB cable for connection to a PC, WeatherSmart software and pipe clamps for mounting the sensor array to a mast. Note: 3 AA alkaline or Lithium batteries are required but not included.

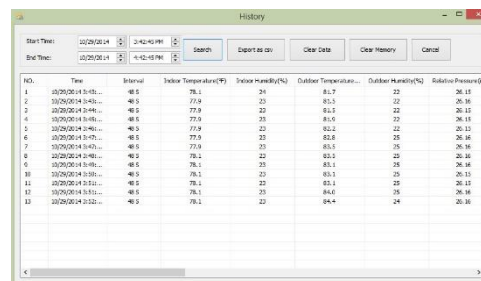
Specifications

Display Ranges	
Wind Speed	0-112 MPH (0-50m/s) Accuracy: +/- 1m/s (<10 m/s) +/- 10% (>10 m/s) Displays in mph, m/s, km/h, knots or Beaufort
Outdoor Temperature	-40 to 65°C (-40 to 149°F) 0.1 °C resolution Displays in °C or °F Accuracy: +/-1°C
Indoor Temperature	0 to 50°C (32 to 122°F) 0.1 °C resolution Displays in °C or °F Accuracy: +/-1°C
Humidity	1% to 99% (1% resolution) Basic Accuracy: +/-10% @25C 30-80% Accuracy: +/-5% @25C
Rain Gauge	0-9999mm (394 inches) 0.1mm resolution (<1000mm) 1.0mm (>1000mm) Accuracy: +/- 10% Displays in mm or inches (hour, day, week, month or total)
Barometric Pressure	8.85 to 32.5 inHg 0.01inHg resolution Within range 27.13 to 31.89 inHg Accuracy: +/-3 hpa Displays in inHG or hPa
Wind Direction	LCD Compass 22.5° resolution
Light Measurement	0-300,000 lux
Wireless Transmitter / Sensor Array	
Operating Frequency	433 MHz
Update Interval	48 secs
Operating Distance	Up to 100 meters (300 feet) between transmitter and base station
Wind Survivability	200 km/h (125 mph)
Construction	UV resistant white thermoplastic and stainless mounting pole
Batteries	Solar Powered Rechargeable AA Batteries (included)
Mounting	Pole mount using 2 stainless pole clamps
Base Station Specs	
Setup	Base Station or Computer
Display	Backlit LCD, Charcoal Colored Frame
Memory Capacity	4080 data samples (memory meter on display)
Computer Interface	USB
Included Software	WeatherSmart Windows software with WeatherUnderground upload
Batteries	3 type AA LR6 Alkaline (not included) gives 1 year battery life. To extend battery life, Base Station can also be powered via USB (included) or 5V AC adapter (sold separately).
Dimensions (L x W x H)	177 x 152 x 50mm (7" x 6" x 2")
Mounting	Wall or desktop
General Specs	
Settable Alarms	Temp, Humidity, Wind Chill, DewPoint, Rainfall, Wind Speed, Wind Gust, Barometric Pressure, Light, UV Index, Heat Index
Alarm duration	Up to 120 seconds
Time Setting	Automatic thru WWVB or manual, Perpetual Calendar
Time Display	12hr or 24hr
Shipping Weight	2.3kg (5lbs) Note: Some assembly required.
Warranty	1 Year
System Ordering	TP2700WC Data Logging Wireless Solar Weather Station

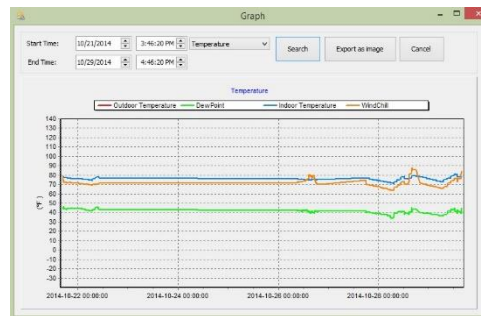
WeatherSmart Software



Main EasyWeather Screen



Stored Data in Text Format – can export to Excel



Stored Data in Graph Format



For further information contact: Tyconsystems.com

