

Outdoor UPS Systems

Features

- Weatherproof, UV resistant, outdoor enclosures
- Powered over CAT5 cable using POE and/or Solar
- Generous interior space for customer electronics
- Wall or Pole Mounting
- Isolates Customer Equipment from Power Line Surges
- High Quality Lithium-ion LiFePo4 Batteries
- Advanced battery charge controller protects against overcharge and over discharge



UPSPro™
Die Cast Enclosure

Applications

- Wireless Base Stations and Clients
- Surveillance Cameras
- Wireless Bridge and Repeaters
- Remote Sensors
- Mission critical outdoor power
- Backup Power Systems



UPSPro™
Polycarbonate Enclosure

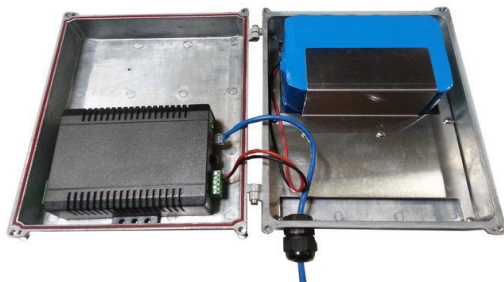
Description

The UPSPro™ Lithium series outdoor enclosures are designed for applications that require a backup power source in order to maintain uninterrupted service to customers. The enclosure is powered over a CAT5 network cable via Power Over Ethernet (POE) using a POE Supply/Inserter (included). Features include an advanced battery charge controller to protect against over-discharging of the Lithium-ion battery packs. The battery packs have built-in charging electronics to control the proper charge rates of the Lithium-ion cells.

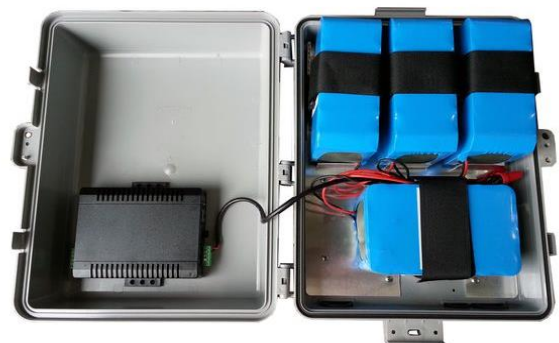
The enclosures have multiple ports for CAT5 cable, antenna cables/connectors or other cabling. They are vented.

There is a generous amount of space reserved inside the enclosures for customer electronics such as controllers, wireless AP or CPE cards, sensors, etc. Equipment runs on battery power which isolates it from power line surges which is a main cause of outdoor equipment failure.

The units are equipped with a Solar Ready controller so they can also be powered using solar panels in addition to or instead of the POE power supply



UPSPro™ Lithium Die Cast Enclosure



UPSPro™ Lithium Polycarbonate Enclosure System

Specifications

	UPS-DC1212-19L	UPS-PL1212-38L	UPS-PL1212-76L
POE Output Voltage	12VDC Passive POE		
POE Input Voltage	18VDC to 24VDC		
Battery Voltage	12VDC		
Battery Capacity (Amp Hours)	19Ah	38Ah	76Ah
Battery Type	Lithium-ion LiFePO4		
Battery Life	5-7 Years		
Controller Type	Dual Input Solar/POE, PWM, 12V 8A Max Solar Panel Size 135W		
Over-discharge protection	12.0 VDC +/- 0.2 VDC		
Over-discharge recovery voltage	13.0 VDC +/-0.2 VDC		
Controller Self Consumption	<0.5W		
Charging POE Power Supply	24VDC 60W		
Enclosure Type	Die Cast Aluminum	Polycarbonate	
Enclosure External Size	11 x 8.5 x 3.5" (279 x 216 x 89mm)	17.5 x 12.5 x 6" (445 x 318 x 152mm)	
Enclosure Internal Size	10 x 7.75 x 3" (254 x 197 x 76mm)	14 x 10 x 5" (356 x 254 x 127mm)	
Operating Temperature	-30°C to +60°C (-22°F to 140°F)		
System Weight (without batteries)	4lb (1.8kg)		
Battery Weight (each)	4.9lb (2.2kg)		

Notes:

- All shipments F.O.B. Bluffdale, UT 84065
- Tycon Power Systems Outdoor UPS carry a 2 year limited warranty

System Ordering:

Model #	Enclosure Type	Battery Voltage	POE Output Voltage	Battery Capacity	Solar Ready up to 135W Panel
UPS-DC1212-19L	Die Cast	12VDC	12VDC	19Ah	YES
UPS-PL1212-38L	Polycarbonate	12VDC	12VDC	38Ah	YES
UPS-PL1212-76L	Polycarbonate	12VDC	12VDC	76Ah	YES

For further information contact:

Tyconpower.com



14641 S 800 W Suite A
Bluffdale, UT 84065
PH: 801-432-0003
FAX: 801-618-4220